



## **World Steel in Figures 2007**

Note: The annual IISI publication *World Steel in Figures* was not produced as a booklet in 2007. This PDF file contains the tables and charts usually contained in the print publication every year.

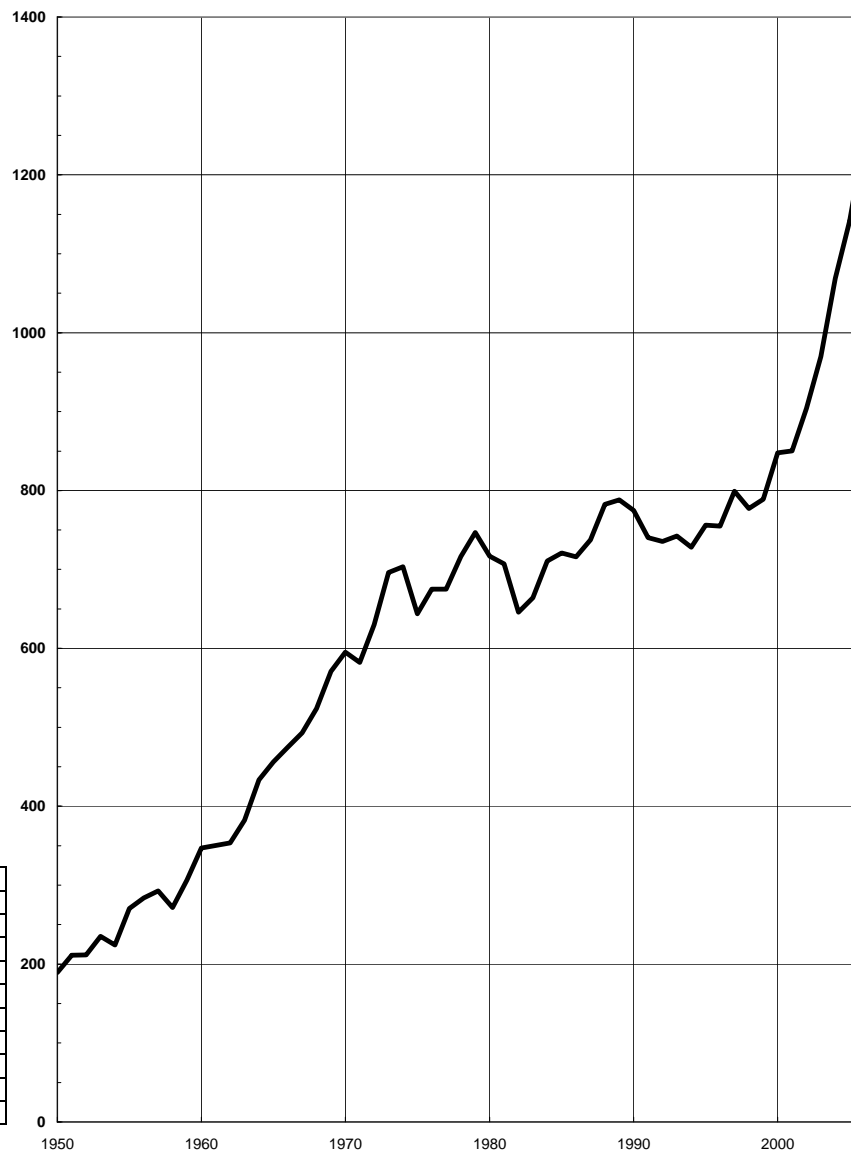
The current edition of *World Steel in Figures* is available from the Bookshop on [worldsteel.org](http://worldsteel.org).

For more information, contact IISI: [steel@iisi.be](mailto:steel@iisi.be)

# World crude steel production 1950 to 2006

(million metric tons)

Years	World
2006	1,244
2005	1,142
2004	1,069
2003	970
2002	904
2001	850
2000	848
1999	789
1998	777
1997	799
1996	755
1995	756
1990	775
1985	721
1980	717
1975	644
1970	595



Average Growth Rates % per annum	
Years	World
2005-06	9.0
2000-05	6.1
1995-00	2.3
1990-95	-0.5
1985-90	1.5
1980-85	0.1
1975-80	2.2
1970-75	1.6

# Top steel-producing companies

## 2005 and 2006

(million metric tons crude steel output)

2006		2005		2006		2005		
1	117.2		n/a	41	7.0	38	7.0	Arcelor Mittal <sup>1</sup>
2	32.7	3	32.0	42	6.8	39	6.8	Nippon Steel
3	32.0	5	29.9	43	6.8	42	6.2	JFE
4	30.1	4	30.5	44	6.6	48	5.7	POSCO
5	22.5	6	22.7	45	6.5	41	6.4	Baosteel
6	21.2	7	19.3	46	6.4	46	5.8	U.S. Steel
7	20.3	8	18.4	47	6.4	59	4.4	Nucor
8	19.1	12	16.1	48	6.3	43	6.2	Tangshan
9	18.3	9	18.2	49	6.3	51	5.4	Corus Group
10	18.2	10	17.5	50	6.0	54	5.0	Riva Group
11	17.5	13	15.2	51	6.0	44	5.9	Severstal
12	16.8	11	16.5	52	5.7	49	5.6	ThyssenKrupp <sup>2</sup>
13	16.1	14	13.9	53	5.4	56	4.6	Evraz Group
14	15.6	15	13.7	54	5.2	55	4.6	Gerdau
15	15.3	20	11.9	55	5.2	57	4.5	Anshan
16	14.6	22	10.5	56	5.1	66	4.0	Jiangsu Shagang Group
17	13.8	18	13.0	57	5.0	53	5.2	Wuhan
18	13.6	16	13.5	58	4.9	61	4.4	Sumitomo
19	13.5	17	13.4	59	4.8	69	3.8	SAIL
20	12.8	19	12.6	60	4.8	50	5.5	Techint
21	12.5	21	11.4	61	4.5	65	4.2	Magnitogorsk
22	11.2	24	10.4	62	4.4	85	2.9	Jinan
23	10.9	27	9.6	63	4.4	60	4.4	Magang Group
24	10.8	25	10.3	64	4.3	70	3.5	Laiwu
25	10.7	26	10.3	65	4.3	78	3.3	China Steel
26	10.5	23	10.4	66	4.2	86	2.9	Shougang
27	9.9	32	8.5	67	4.1	62	4.2	Valin Steel Group
28	9.8	28	9.4	68	4.0	76	3.4	Imidro
29	9.5	30	8.6	69	4.0	63	4.2	IUD
30	9.1	31	8.5	70	3.9	75	3.4	Novolipetsk
31	8.9	33	8.2	71	3.8	68	3.9	Hyundai
32	8.8	29	8.7	72	3.8	58	4.5	Sistema Usiminas
33	8.7	34	8.2	73	3.7	67	4.0	Metinvest
34	7.7	35	7.7	74	3.6	87	2.8	Kobe Steel
35	7.6	40	6.5	75	3.5	52	5.2	Benxi
36	7.5	37	7.0	76	3.5	72	3.4	Baotou
37	7.4	36	7.1	77	3.5	80	3.2	Salzgitter <sup>3</sup>
38	7.2	45	5.8	78	3.4	73	3.4	Celsa
39	7.2	79	3.3	79	3.4	77	3.3	Duferco Group
40	7.0	47	5.8	80	3.4	90	2.7	Anyang
								Mariupol (Ilyich)
								BlueScope
								Panzhuhua
								Jiuquan
								voestalpine
								Handan
								Tata
								Metalloinvest
								Taiyuan
								Jianlong
								Chelyabinsk (Mechel)
								AK Steel
								Liuzhou
								Beitei
								Tangshan Guofeng Steel
								Xinyu
								Erdemir Group
								Nangang
								Kunming
								HKM <sup>4</sup>
								EZDK
								Tonghua
								Zaporizhstahl
								Shaoguan
								Steel Dynamics
								Global Steel Holdings
								SIDOR
								Pingxiang Steel
								Hadeed
								Hebei Jinxi
								Nisshin Steel
								Stelco
								SSAB
								Xinjiang Bayi
								CSN
								Tianjin Tiantie
								IPSCO
								Vizag Steel
								AHMSA
								Lion Group

(1) 2005 tonnages - Mittal Steel 63.0, Arcelor 46.7

(2) 50% of HKM included in ThyssenKrupp

(3) includes part of HKM

(4) total production

# Major steel-producing countries

## 2005 and 2006

(million metric tons crude steel production)

Country	2006		2005		Country	2006		2005	
	Rank	mmt	Rank	mmt		Rank	mmt	Rank	mmt
China	1	422.7	1	355.8	Australia	22	7.9	22	7.8
Japan	2	116.2	2	112.5	Austria	23	7.1	23	7.0
United States	3	98.6	3	94.9	Czech Republic	24	6.9	26	6.2
Russia	4	70.8	4	66.1	Netherlands	25	6.4	24	6.9
South Korea	5	48.5	5	47.8	Romania	26	6.3	25	6.3
Germany	6	47.2	6	44.5	Egypt (e)	27	6.0	28	5.6
India	7	44.0	7	40.9	Argentina	28	5.5	29	5.4
Ukraine	8	40.9	8	38.6	Sweden	29	5.5	27	5.7
Italy	9	31.6	10	29.3	Malaysia (e)	30	5.5	30	5.3
Brazil	10	30.9	9	31.6	Thailand (e)	31	5.4	31	5.2
Turkey	11	23.3	11	21.0	Slovakia	32	5.1	34	4.5
Taiwan, China	12	20.2	13	18.9	Finland	33	5.1	33	4.7
France	13	19.9	12	19.5	Venezuela	34	4.9	32	4.9
Spain	14	18.4	14	17.8	Kazakhstan	35	4.2	35	4.5
Mexico	15	16.3	15	16.2	Saudi Arabia	36	4.0	36	4.2
Canada	16	15.4	16	15.3	Indonesia (e)	37	3.8	37	3.7
United Kingdom	17	13.9	17	13.2	Luxembourg	38	2.8	39	2.2
Belgium	18	11.6	18	10.4	Greece	39	2.4	38	2.3
Poland	19	10.0	21	8.3	Byelorussia	40	2.3	40	2.0
Iran	20	9.8	20	9.4	Bulgaria	41	2.1	41	2.0
South Africa	21	9.7	19	9.5	Hungary	42	2.1	42	2.0
					Others		23.3		21.9
					<b>World</b>		<b>1,244.2</b>		<b>1,141.9</b>

## Crude steel production by process 2006

	Production mmt	Oxygen %	Electric %	Open hearth %	Other %	Total %
Austria	7.1	91.0	9.0	-	-	100.0
Belgium	11.6	70.3	29.7	-	-	100.0
Czech Republic	6.9	91.6	8.4	-	-	100.0
Finland	5.1	68.3	31.7	-	-	100.0
France	19.9	61.7	38.3	-	-	100.0
Germany	47.2	68.9	31.1	-	-	100.0
Hungary	2.1	79.0	21.0	-	-	100.0
Italy	31.6	37.4	62.6	-	-	100.0
Luxembourg	2.8	-	100.0	-	-	100.0
Netherlands	6.4	97.7	2.3	-	-	100.0
Poland	10.0	57.6	42.4	-	-	100.0
Slovakia	5.1	92.6	7.4	-	-	100.0
Spain	18.4	19.6	80.4	-	-	100.0
Sweden	5.5	65.6	34.4	-	-	100.0
United Kingdom	13.9	80.8	19.2	-	-	100.0
Other EU	4.4	-	100.0	-	-	100.0
<b>European Union (25)</b>	<b>197.9</b>	<b>59.5</b>	<b>40.5</b>	<b>-</b>	<b>-</b>	<b>100.0</b>
Romania	6.3	69.8	30.2	-	-	100.0
Turkey	23.3	29.2	70.8	-	-	100.0
Others	6.3	44.6	55.4	-	-	100.0
<b>Other Europe</b>	<b>35.9</b>	<b>39.0</b>	<b>61.0</b>	<b>-</b>	<b>-</b>	<b>100.0</b>
Russia (e)	70.8	61.6	18.4	20.0	-	100.0
Ukraine (e)	40.9	56.4	9.8	33.8	-	100.0
Other CIS	8.9	47.9	43.7	8.5	-	100.0
<b>CIS</b>	<b>120.7</b>	<b>58.8</b>	<b>17.3</b>	<b>23.9</b>	<b>-</b>	<b>100.0</b>
Canada	15.4	58.6	41.4	-	-	100.0
Mexico	16.3	25.7	74.3	-	-	100.0
United States	98.6	43.1	56.9	-	-	100.0
<b>NAFTA</b>	<b>130.3</b>	<b>42.7</b>	<b>57.3</b>	<b>-</b>	<b>-</b>	<b>100.0</b>
Argentina	5.5	47.5	52.5	-	-	100.0
Brazil	30.9	73.9	24.4	-	1.7	100.0
Chile	1.6	72.4	27.6	-	-	100.0
Venezuela	4.9	-	100.0	-	-	100.0
Others	3.4	22.4	77.6	-	-	100.0
<b>Central and South America</b>	<b>46.3</b>	<b>59.1</b>	<b>39.7</b>	<b>-</b>	<b>1.2</b>	<b>100.0</b>
Egypt (e)	6.0	21.5	78.5	-	-	100.0
South Africa	9.7	53.2	46.8	-	-	100.0
Other Africa	2.6	45.2	54.8	-	-	100.0
<b>Africa</b>	<b>18.4</b>	<b>41.6</b>	<b>58.4</b>	<b>-</b>	<b>-</b>	<b>100.0</b>
Iran (e)	9.8	22.5	77.5	-	-	100.0
Saudi Arabia	4.0	-	100.0	-	-	100.0
Other Middle East	1.3	-	100.0	-	-	100.0
<b>Middle East</b>	<b>15.1</b>	<b>14.6</b>	<b>85.4</b>	<b>-</b>	<b>-</b>	<b>100.0</b>
China	422.7	87.0	13.0	-	-	100.0
India (e)	44.0	47.3	50.5	2.3	-	100.0
Japan	116.2	74.0	26.0	-	-	100.0
South Korea	48.5	54.3	45.7	-	-	100.0
Taiwan, China	20.2	53.0	47.0	-	-	100.0
Other Asia	17.0	-	100.0	-	-	100.0
<b>Asia</b>	<b>668.5</b>	<b>76.5</b>	<b>23.3</b>	<b>0.2</b>	<b>-</b>	<b>100.0</b>
Australia	7.9	81.7	18.3	-	-	100.0
New Zealand	0.8	71.3	28.7	-	-	100.0
<b>World</b>	<b>1,241.69</b>	<b>65.5</b>	<b>32.0</b>	<b>2.4</b>	<b>0.0</b>	<b>100.0</b>

## Continuously-cast steel output 2004 to 2006

	Million metric tons (mmt)			% crude steel output		
	2004	2005	2006	2004	2005	2006
Austria	6.3	6.8	6.8	96.0	96.2	95.9
Belgium	11.7	10.4	11.6	99.8	100.0	100.0
Czech Republic	6.3	5.5	6.1	90.1	88.8	89.6
Finland	4.8	4.7	5.0	99.5	99.5	99.5
France	20.0	18.7	19.0	96.1	95.8	95.6
Germany	44.9	42.9	45.5	96.8	96.4	96.3
Hungary	2.0	2.0	2.1	99.9	99.9	99.8
Italy	27.4	28.1	30.2	95.9	95.6	95.5
Luxembourg	2.7	2.2	2.8	100.0	100.0	100.0
Netherlands	6.7	6.8	6.2	98.0	98.0	97.5
Poland	8.2	7.0	8.2	77.1	84.2	82.4
Slovakia	4.4	4.5	5.1	99.7	99.7	99.8
Spain	17.3	17.5	18.3	98.0	98.0	99.4
Sweden	5.3	5.1	4.8	88.8	88.9	87.4
United Kingdom	13.4	12.9	13.7	97.2	97.8	98.4
Other EU	3.9	4.1	4.3	98.3	97.0	97.1
<b>European Union (25)</b>	<b>184.7</b>	<b>178.6</b>	<b>189.2</b>	<b>95.6</b>	<b>96.0</b>	<b>95.9</b>
Romania	4.9	5.4	5.5	81.1	85.3	87.0
Turkey	20.5	21.0	23.3	100.0	100.0	100.0
Others	3.6	4.1	5.5	69.8	74.1	85.3
<b>Other Europe</b>	<b>29.0</b>	<b>30.4</b>	<b>34.3</b>	<b>91.5</b>	<b>92.8</b>	<b>95.1</b>
Russia (e)	35.6	35.7	38.1	54.3	54.0	53.8
Ukraine (e)	17.3	17.3	18.3	44.6	44.8	44.7
Other CIS	3.9	4.5	4.6	40.7	50.0	51.1
<b>CIS</b>	<b>56.8</b>	<b>57.5</b>	<b>61.0</b>	<b>49.8</b>	<b>50.5</b>	<b>50.5</b>
Canada	16.1	15.1	15.2	98.5	98.8	98.8
Mexico	16.1	15.9	16.0	96.2	98.0	98.0
United States	96.9	91.9	95.3	97.2	96.8	96.7
<b>NAFTA</b>	<b>129.1</b>	<b>122.9</b>	<b>126.5</b>	<b>97.2</b>	<b>97.2</b>	<b>97.1</b>
Argentina	5.0	5.3	5.5	98.3	98.5	98.5
Brazil	30.5	29.2	28.5	92.7	92.4	92.3
Venezuela	4.6	4.9	4.9	100.0	100.0	100.0
Other Latin America	4.0	4.0	4.4	91.1	90.2	88.1
<b>Central and South America</b>	<b>44.1</b>	<b>43.4</b>	<b>43.2</b>	<b>93.9</b>	<b>93.7</b>	<b>93.4</b>
Egypt (e)	4.7	5.5	5.9	97.9	98.2	97.5
South Africa	9.4	9.4	9.6	98.7	98.5	98.4
Other Africa	1.1	1.5	1.4	89.3	93.2	98.3
<b>Africa</b>	<b>15.2</b>	<b>16.3</b>	<b>16.9</b>	<b>97.7</b>	<b>97.9</b>	<b>98.1</b>
Iran	8.7	9.4	9.8	100.0	100.0	100.0
Saudi Arabia	3.9	4.2	4.0	100.0	100.0	100.0
Other Middle East	1.4	1.4	1.3	100.0	100.0	100.0
<b>Middle East</b>	<b>14.0</b>	<b>14.9</b>	<b>15.1</b>	<b>100.0</b>	<b>100.0</b>	<b>100.0</b>
China	263.5	334.3	400.7	94.0	94.0	94.8
India (e)	21.5	25.1	29.0	65.9	61.4	65.9
Japan	110.2	109.9	113.6	97.8	97.7	97.7
South Korea	46.7	46.9	47.5	98.3	98.1	98.0
Taiwan, China	19.5	18.9	20.0	99.6	99.6	99.1
Other Asia	14.9	15.2	15.7	100.0	100.0	100.0
<b>Asia</b>	<b>476.4</b>	<b>550.2</b>	<b>626.5</b>	<b>93.8</b>	<b>93.1</b>	<b>93.9</b>
Australia	7.4	7.7	7.8	99.2	99.3	99.3
New Zealand	0.9	0.9	0.8	100.0	100.0	100.0
<b>World</b>	<b>957.4</b>	<b>1,022.8</b>	<b>1,121.2</b>	<b>90.0</b>	<b>90.0</b>	<b>90.5</b>

# Monthly crude steel production

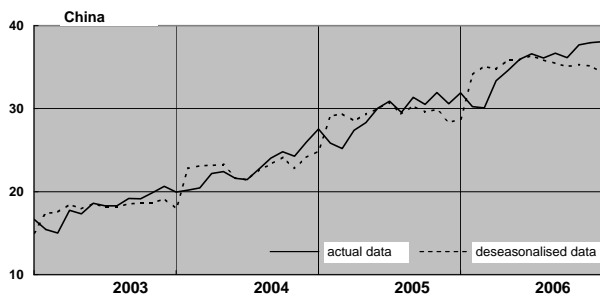
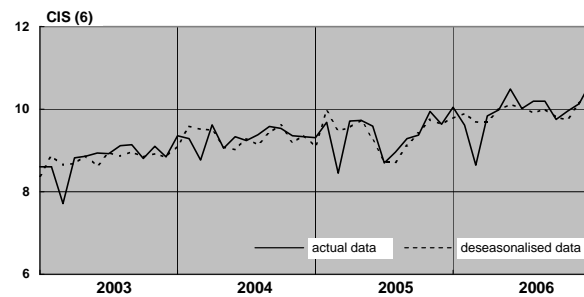
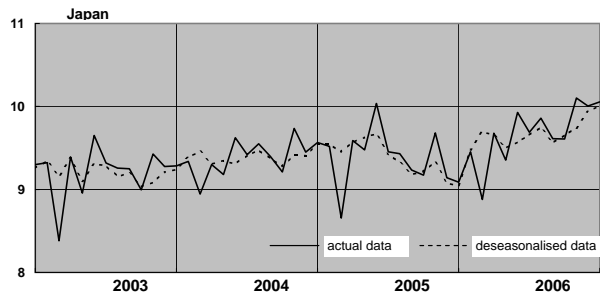
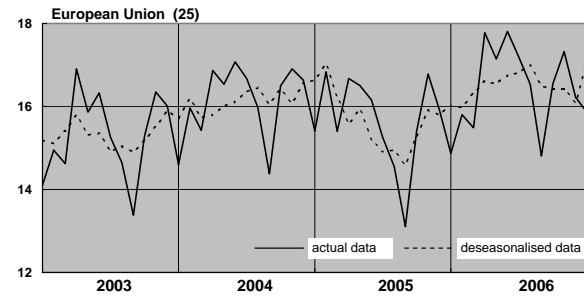
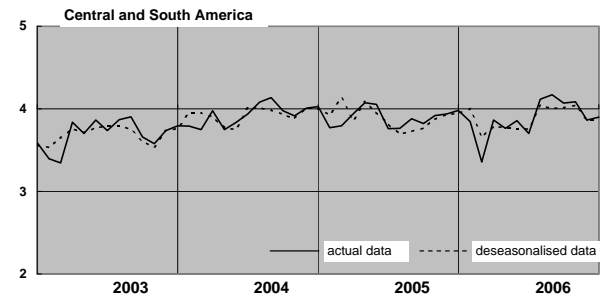
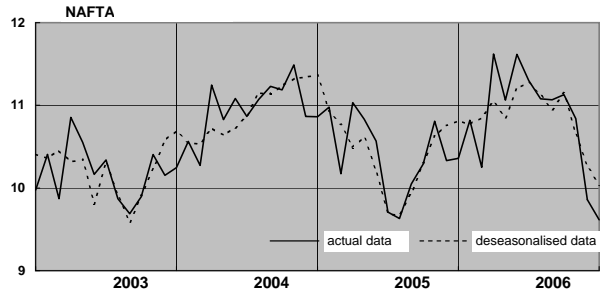
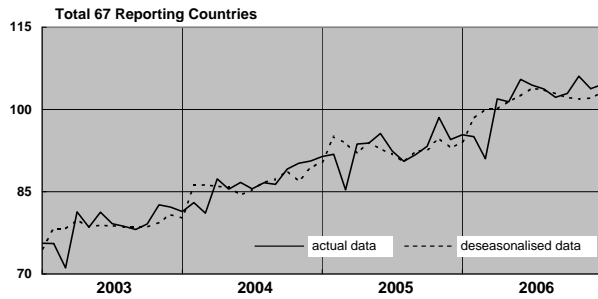
## 2003 to 2006

(million metric tons)

### The 67 reporting countries

Algeria, Argentina, Australia, Austria, Belgium, Bosnia-Herzegovina, Brazil, Bulgaria, Byelorussia, Canada, Chile, China, Colombia, Croatia, Cuba, Czech Republic, Dominican Republic, Ecuador, Egypt, El Salvador, Finland, France, Germany, Greece, Guatemala, Hungary, India, Iran, Italy, Japan, Kazakhstan, Libya, Luxembourg, Macedonia, Mexico, Moldova, Morocco, Netherlands, New Zealand, Norway, Paraguay, Peru, Poland, Portugal, Qatar, Romania, Russia, Saudi Arabia, Serbia and Montenegro, Slovak Republic, Slovenia, South Africa, South Korea, Spain, Sweden, Taiwan, China, Trinidad and Tobago, Tunisia, Turkey, Ukraine, United Kingdom, United States, Uruguay, Uzbekistan, Venezuela, and Zimbabwe.

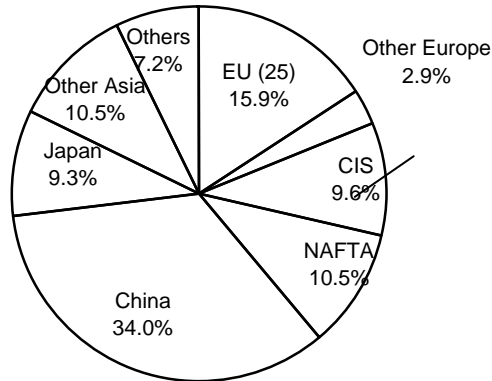
In 2006 these 67 countries accounted for more than 98% of world crude steel production.



# Steel production and use: geographical distribution, 2006

World total: 1244 million metric tons crude steel

## Production

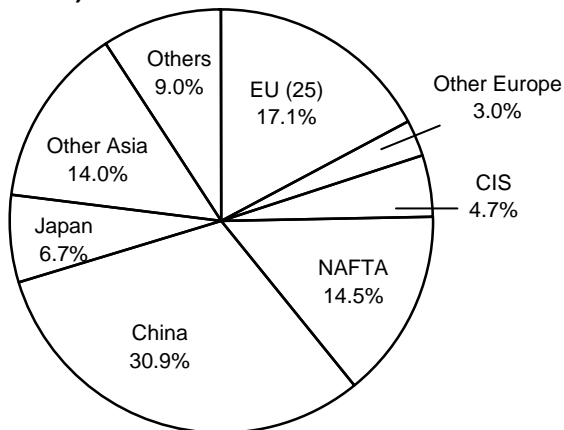


Others comprise:

Africa 1.5%  
Middle East 1.2%

Central and South America 3.7%  
Australia and New Zealand 0.7%

## Consumption (crude steel equivalent)



Others comprise:

Africa 1.8%  
Middle East 3.2%

Central and South America 3.4%  
Australia and New Zealand 0.7%

# World steel trade by area 2005

(million metric tons)

Exporting region Destination	Exporting region										Total Imports	of which: extra-regional imports
	European Union (25)	Other Europe	CIS	North America	South America	Africa & Middle East	China	Japan	Other Asia	Oceania		
European Union (25)	99.9	7.9	9.2	0.5	1.4	2.2	1.5	0.4	1.7	0.0	124.6	24.7
Other Europe	10.6	0.6	7.7	0.1	0.1	0.1	0.1	0.2	0.1	0.0	19.6	19.0
CIS	1.4	0.2	7.6	0.1	0.0	0.0	0.2	0.1	0.3	0.0	10.0	2.3
North America	7.9	3.5	3.2	18.8	4.4	0.7	3.2	2.3	4.3	0.3	48.7	29.9
South America	1.0	0.1	1.3	0.4	2.5	0.1	0.1	0.2	0.2	0.0	5.9	3.4
Africa	3.1	1.6	6.0	0.1	0.6	3.3	0.4	0.3	0.9	0.0	16.4	13.1
Middle East	4.0	4.8	10.0	0.1	0.0	1.4	0.7	1.3	2.3	0.0	24.7	23.3
China	1.8	0.6	4.9	0.5	5.1	0.5	-	5.7	8.2	0.0	27.3	27.3
Japan	0.1	0.0	0.0	0.1	0.0	0.0	1.1	-	3.9	0.0	5.2	5.2
Other Asia	5.3	3.5	11.7	0.8	3.0	2.2	19.6	20.8	11.4	0.3	78.6	67.2
Oceania	0.3	0.2	0.1	0.1	0.0	0.1	0.5	0.7	1.8	0.2	3.9	3.7
Total exports	135.3	23.1	61.7	21.6	17.2	10.5	27.4	32.0	35.1	0.9	364.8	219.2
of which: extra-regional exports*	35.4	22.5	54.1	2.8	14.7	5.8	27.4	32.0	23.7	0.7	219.2	
Net exports (exports-imports)	10.7	3.5	51.8	-27.1	11.3	-30.6	0.1	26.8	-43.5	-3.0		

\* excluding intra-regional trade marked



## Major importers and exporters of steel 2005

(million metric tons)

Rank	Country	Total Exports
1	European Union (25) <sup>1</sup>	35.4
2	Japan	32.0
3	Russia	30.9
4	China	27.4
5	Ukraine	27.3
6	Germany <sup>2</sup>	26.0
7	Belgium-Luxembourg <sup>2</sup>	21.6
8	France <sup>2</sup>	17.6
9	South Korea	16.1
10	Italy <sup>2</sup>	14.4
11	Brazil	12.6
12	Turkey	12.3
13	United States	9.4
14	Taiwan, China	9.2
15	United Kingdom <sup>2</sup>	8.7
16	Netherlands <sup>2</sup>	8.2
17	Spain <sup>2</sup>	6.7
18	Austria <sup>2</sup>	6.1
19	India	6.0
20	Canada	6.0

Rank	Country	Total Imports
1	United States	30.2
2	China	27.3
3	European Union (25) <sup>1</sup>	24.7
4	Germany <sup>2</sup>	20.4
5	South Korea	18.8
6	Italy <sup>2</sup>	18.3
7	France <sup>2</sup>	14.9
8	Belgium-Luxembourg <sup>2</sup>	13.8
9	Thailand	12.5
10	Spain <sup>2</sup>	11.3
11	Taiwan, China	11.1
12	Turkey	10.2
13	Canada	9.9
14	Iran	8.4
15	United Kingdom <sup>2</sup>	7.7
16	Netherlands <sup>2</sup>	6.6
17	Mexico	5.5
18	United Arab Emirates	5.4
19	Indonesia	5.4
20	Hong Kong	5.4

Rank	Country	Net Exports <sup>3</sup>
1	Japan	26.8
2	Ukraine	26.3
3	Russia	26.3
4	Brazil	11.8
5	European Union (25) <sup>1</sup>	10.7
6	Belgium-Luxembourg <sup>2</sup>	7.8
7	Germany <sup>2</sup>	5.6
8	South Africa	4.1
9	Austria <sup>2</sup>	3.0
10	France <sup>2</sup>	2.6
11	Slovakia <sup>2</sup>	2.5
12	Finland <sup>2</sup>	2.3
13	Romania	2.2
14	Turkey	2.0
15	Venezuela	1.9

Rank	Country	Net Imports <sup>4</sup>
1	United States	20.8
2	Thailand	10.4
3	Iran	6.9
4	United Arab Emirates	5.4
5	Spain <sup>2</sup>	4.6
6	Viet Nam	4.5
7	Indonesia	4.3
8	Canada	3.9
9	Hong Kong	3.9
10	Italy <sup>2</sup>	3.9
11	South Korea	2.7
12	Saudi Arabia	2.7
13	Philippines	2.6
14	Syria	2.2
15	Pakistan	2.1

<sup>1</sup> Excluding intra-European Union (25) trade

<sup>2</sup> Data for individual European Union (25) countries include intra-European trade

<sup>3</sup> Exports less imports

<sup>4</sup> Imports less exports

## World steel exports - analysis by product 2001 to 2005

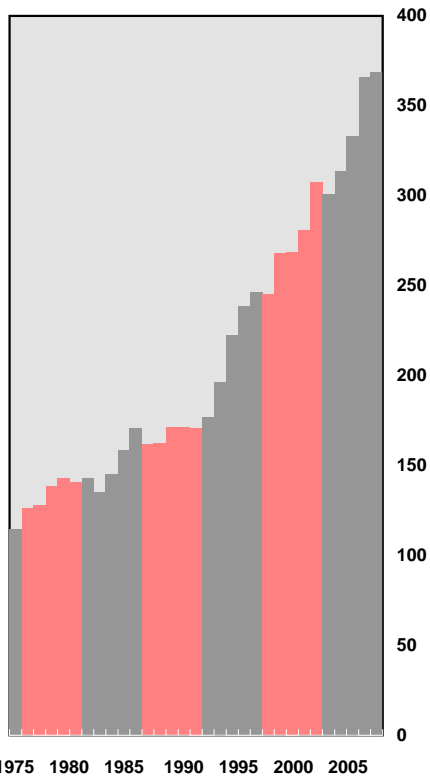
(million metric tons)

	2001	2002	2003	2004	2005
Ingots and semi-finished material	47.3	50.5	51.0	58.9	59.5
Railway track material	2.5	2.5	2.7	2.4	2.4
Angles, shapes and sections	17.8	17.1	17.7	19.4	18.5
Concrete re-inforcing bars	13.2	13.0	14.8	15.9	17.9
Bars and rods, hot-rolled	9.3	8.5	9.1	9.9	10.2
Wire rod	16.3	17.6	17.9	20.6	19.8
Drawn wire	4.2	4.5	4.9	5.5	5.4
Other bars and rods	3.8	3.6	3.9	4.8	4.9
Hot-rolled strip	3.4	3.4	3.2	3.2	3.3
Cold-rolled strip	3.2	3.4	3.6	4.5	4.5
Hot-rolled sheets and coils	43.7	49.0	50.0	54.9	53.3
Plates	17.7	18.2	20.6	24.1	26.2
Cold-rolled sheets and coils	26.9	28.4	29.8	31.2	29.9
Electrical sheet and strip	2.6	2.7	3.4	3.7	3.7
Tinmill products	6.0	6.2	6.4	6.5	6.0
Galvanised sheet	20.5	23.1	24.3	26.8	25.6
Other coated sheet	6.1	6.7	6.8	7.4	7.3
Steel tubes and fittings	23.8	24.5	23.8	28.2	31.0
Wheels (forged and rolled) and axles	0.3	0.3	0.3	0.4	0.4
Castings	0.5	0.5	0.6	0.9	0.9
Forgings	0.8	0.8	0.8	1.1	1.0
Other	0.0	0.0	0.0	0.0	0.0
<b>Total</b>	<b>270.0</b>	<b>284.5</b>	<b>295.7</b>	<b>330.0</b>	<b>331.9</b>

*Exports in World Steel in Figures* include intra-EU trade and trade between countries of the former CMEA, and are based on a broad definition of the steel industry and its products, including ingots, semi-finished products, hot-rolled and cold-finished products, tubes, wire, and unworked castings and forgings. The above table comprises the exports of 37 countries, which represents approximately 90% of total world trade in 2005.

# World trade in steel products 1975 to 2005

(million metric tons finished steel)

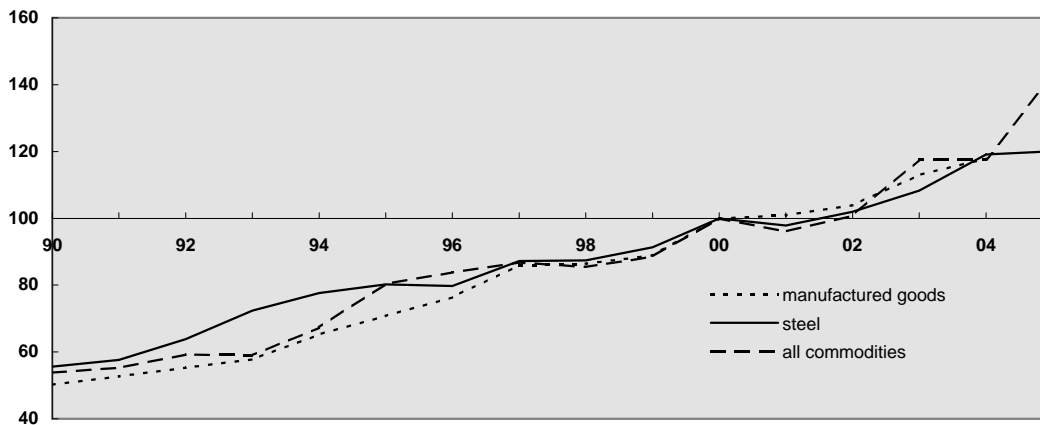


Year	Exports	Production	Exports %
1975	114.7	506.9	22.6
1976	126.1	533.7	23.6
1977	127.9	536.5	23.8
1978	138.6	571.7	24.2
1979	143.1	598.7	23.9
1980	140.6	578.7	24.3
1981	142.8	574.3	24.9
1982	135.5	528.7	25.6
1983	145.3	546.5	26.6
1984	158.8	588.4	27.0
1985	171.0	599.0	28.5
1986	161.7	597.4	27.1
1987	162.3	615.5	26.4
1988	171.1	656.8	26.1
1989	171.2	664.4	25.8
1990	171.0	654.0	26.2
1991	177.1	634.7	27.9
1992	196.1	632.8	31.0
1993	222.5	639.5	34.8
1994	238.6	631.1	37.8
1995	246.6	658.7	37.4
1996	245.1	660.1	37.1
1997	267.9	701.5	38.2
1998	268.7	685.2	39.2
1999	280.8	697.0	40.3
2000	307.3	750.8	40.9
2001	300.8	753.5	39.9
2002	313.5	803.3	39.0
2003	332.9	862.9	38.6
2004	368.9	1016.4	36.3

Exports are of finished and semi-finished steel products. Production of finished steel, where not available from national sources, is calculated from crude steel production, taking into account the continuous casting ratio.

## World volume of trade - 1990 to 2005

Quantum Indices 2000 = 100



# Scrap: estimated consumption, trade and apparent domestic supply, 2005

(million metric tons)

Country	Consumption	- Imports	+ Exports	= Apparent Domestic Supply
Austria	2.6	1.1	1.1	2.6
Belgium-Luxembourg	6.3	7.7	3.0	1.6
Czech Republic	2.5	0.4	1.4	3.5
Finland	2.1	0.8	0.3	1.7
France	9.9	2.8	5.0	12.1
Germany	19.6	5.0	6.7	21.2
Hungary	0.9	0.0	0.8	1.6
Italy	21.7	5.4	0.2	16.6
Netherlands	1.7	2.2	4.2	3.7
Poland	5.1	0.2	1.4	6.3
Slovakia	1.3	0.2	0.4	1.5
Spain	15.4	7.0	0.1	8.6
Sweden	2.7	0.3	0.9	3.3
United Kingdom	4.5	0.2	6.1	10.5
Other EU	5.0	3.3	3.6	5.3
<b>European Union (15)</b>	<b>101.3</b>	<b>36.5</b>	<b>35.1</b>	<b>99.9</b>
Bulgaria	1.0	0.1	0.8	1.7
Romania	3.2	0.0	1.7	4.8
Turkey	17.6	13.2	0.1	4.4
Others	3.1	1.0	1.5	3.6
<b>Other Europe</b>	<b>24.9</b>	<b>14.3</b>	<b>4.0</b>	<b>14.5</b>
<b>CIS</b>	<b>50.0</b>	<b>2.3</b>	<b>17.0</b>	<b>64.7</b>
Canada	8.0	1.6	3.1	9.5
Mexico	12.5	1.5	0.6	11.6
United States	57.0	3.8	13.0	66.2
<b>NAFTA</b>	<b>77.5</b>	<b>6.9</b>	<b>16.6</b>	<b>87.2</b>
Argentina	2.3	0.0	0.0	2.2
Brazil	8.1	0.1	0.0	8.0
Venezuela	1.7	0.0	0.1	1.7
Other Central and South America	0.4	0.2	0.4	1.1
<b>Central and South America</b>	<b>14.7</b>	<b>0.2</b>	<b>0.4</b>	<b>14.9</b>
South Africa	3.1	0.1	0.4	3.4
China	60.0	10.1	0.0	49.9
Japan	46.9	0.2	7.6	54.3
South Korea	25.4	6.8	0.2	18.8
Taiwan, China	10.1	3.4	0.1	6.8
Other Asia	24.8	11.5	2.1	15.4
<b>Asia</b>	<b>167.3</b>	<b>32.0</b>	<b>10.0</b>	<b>145.2</b>
Australia	2.7	0.0	1.3	3.9
<b>World</b>	<b>441.5</b>	<b>92.4</b>	<b>84.8</b>	<b>433.9</b>

## Pig iron 2005 and 2006

(million metric tons)

	Production 2006	Production 2005	- Exports 2005	+ Imports 2005	= Apparent Consumption 2005
Austria	5.5	5.4	0.0	0.1	5.5
Belgium-Luxembourg	7.5	7.3	0.2	0.3	7.4
Czech Republic	5.2	4.6	0.0	0.1	4.7
Finland	3.2	3.1	0.0	0.0	3.1
France	13.0	12.7	0.0	0.2	13.0
Germany	30.4	28.9	0.1	0.3	29.1
Hungary	1.3	1.3	0.0	0.0	1.3
Italy	11.5	11.4	0.0	1.7	13.1
Netherlands	5.4	6.0	0.2	0.5	6.4
Poland	5.3	4.5	0.0	0.2	4.7
Portugal	-	-	0.0	0.0	0.0
Slovakia	4.1	3.7	0.0	0.0	3.7
Spain	3.4	4.2	0.0	0.8	5.0
Sweden	3.6	3.7	0.1	0.0	3.7
United Kingdom	10.7	10.2	0.0	0.1	10.3
Other EU	-	-	0.0	0.1	0.1
<b>European Union (25)</b>	<b>110.2</b>	<b>107.0</b>	<b>0.6</b>	<b>4.7</b>	<b>111.0</b>
Bulgaria	1.1	1.1	0.0	0.0	1.1
Romania	4.0	4.1	-	0.0	4.1
Turkey	6.0	6.0	0.0	0.4	6.4
Others	1.9	0.2	0.0	0.0	0.2
<b>Other Europe</b>	<b>13.0</b>	<b>11.3</b>	<b>0.1</b>	<b>0.5</b>	<b>11.8</b>
Kazakhstan	3.4	3.6	0.0	0.0	3.6
Russia	51.7	48.4	4.9	0.0	43.5
Ukraine	32.9	30.8	0.9	0.2	30.1
Other CIS	-	-	0.0	0.2	0.2
<b>CIS</b>	<b>88.1</b>	<b>82.8</b>	<b>5.8</b>	<b>0.4</b>	<b>77.4</b>
Canada	8.3	8.3	0.1	0.1	8.3
Mexico	3.8	4.0	0.0	0.4	4.4
United States	37.9	37.2	0.1	6.0	43.2
<b>NAFTA</b>	<b>50.0</b>	<b>49.5</b>	<b>0.2</b>	<b>6.5</b>	<b>55.9</b>
Argentina	2.5	2.6	-	0.0	2.7
Brazil	32.5	33.9	7.1	0.0	26.8
Chile	1.1	1.1	-	0.0	1.1
Venezuela	-	-	0.0	0.0	-0.0
Other Latin America	0.8	0.7	0.0	0.0	0.7
<b>Central and South America</b>	<b>36.8</b>	<b>38.3</b>	<b>7.2</b>	<b>0.1</b>	<b>31.2</b>
Egypt	1.1	1.1	0.0	0.0	1.1
South Africa	6.2	6.1	0.7	0.0	5.4
Other Africa	1.1	1.1	0.0	0.0	1.1
<b>Africa</b>	<b>8.4</b>	<b>8.3</b>	<b>0.7</b>	<b>0.0</b>	<b>7.6</b>
Iran	2.0	2.3	0.0	0.0	2.3
Other Middle East	-	-	0.0	0.1	0.1
<b>Middle East</b>	<b>2.0</b>	<b>2.3</b>	<b>0.0</b>	<b>0.1</b>	<b>2.4</b>
China	404.2	337.4	2.2	0.3	335.4
India	28.3	27.1	0.3	0.0	26.8
Japan	84.3	83.1	0.0	1.0	84.1
South Korea	27.6	27.3	0.0	1.5	28.8
Taiwan, China	10.4	9.4	0.0	0.9	10.3
Other Asia	1.3	1.5	0.3	1.8	3.0
<b>Asia</b>	<b>556.0</b>	<b>485.8</b>	<b>2.9</b>	<b>5.5</b>	<b>488.4</b>
Australia	6.4	6.2	0.0	0.3	6.5
New Zealand	0.7	0.7	-	0.0	0.7
Other Oceania	-	-	-	0.0	0.0
<b>Oceania</b>	<b>7.1</b>	<b>6.9</b>	<b>0.0</b>	<b>0.3</b>	<b>7.2</b>
<b>World</b>	<b>871.6</b>	<b>792.3</b>	<b>17.5</b>	<b>18.0</b>	<b>792.8</b>

# Direct reduced iron production

## 2001 to 2006

(million metric tons)

Country	2000	2001	2002	2003	2004	2005	2006
Germany	0.5	0.2	0.5	0.6	0.6	0.4	0.6
Sweden	0.1	0.1	0.1	0.1	0.1	0.1	0.1
<b>European Union (15)</b>	<b>0.6</b>	<b>0.3</b>	<b>0.7</b>	<b>0.7</b>	<b>0.7</b>	<b>0.6</b>	<b>0.7</b>
Russia	1.9	2.5	2.9	2.9	3.1	3.3	3.3
Canada	1.1	0.0	0.2	0.5	1.1	0.6	0.4
Mexico	5.6	3.7	4.7	5.5	6.3	6.1	6.2
United States	1.6	0.1	0.5	0.2	0.2	0.2	0.2
<b>NAFTA</b>	<b>8.3</b>	<b>3.8</b>	<b>5.4</b>	<b>6.2</b>	<b>7.6</b>	<b>6.9</b>	<b>6.9</b>
Argentina	1.4	1.3	1.5	1.7	1.8	1.8	1.9
Brazil	0.4	0.3	0.4	0.4	0.4	0.4	0.4
Peru	0.1	0.1	0.0	0.1	0.1	0.1	0.1
Trinidad and Tobago	1.5	2.0	2.3	2.2	2.2	2.1	2.1
Venezuela	6.4	5.5	6.8	6.6	7.8	8.9	8.4
<b>Central and South America</b>	<b>9.8</b>	<b>9.2</b>	<b>11.0</b>	<b>11.0</b>	<b>12.3</b>	<b>13.3</b>	<b>12.9</b>
Egypt	2.1	2.4	2.5	2.9	3.0	2.9	3.1
Libya	1.5	1.1	1.2	1.3	1.6	1.7	1.6
South Africa	1.5	1.6	1.7	1.5	1.6	1.8	1.8
<b>Africa</b>	<b>5.1</b>	<b>5.0</b>	<b>5.4</b>	<b>5.7</b>	<b>6.2</b>	<b>6.4</b>	<b>6.5</b>
Iran	4.5	5.0	5.3	5.0	6.4	6.9	6.9
Qatar	0.6	0.7	0.8	0.8	0.8	0.8	0.9
Saudi Arabia	3.1	2.9	3.3	3.3	3.4	3.6	3.6
<b>Middle East</b>	<b>8.2</b>	<b>8.6</b>	<b>9.3</b>	<b>9.1</b>	<b>10.7</b>	<b>11.3</b>	<b>11.4</b>
China	0.1	0.1	0.2	0.3	0.4	0.4	0.4
India	5.5	5.7	5.7	7.1	9.1	12.1	15.0
Indonesia	1.7	1.5	1.4	1.2	1.4	1.3	1.3
Malaysia	1.2	1.0	1.1	1.6	1.7	1.3	1.5
Myanmar	0.0	0.0	0.0	0.0	0.0	0.0	0.0
<b>Asia</b>	<b>8.6</b>	<b>8.4</b>	<b>8.5</b>	<b>10.2</b>	<b>12.7</b>	<b>15.1</b>	<b>18.3</b>
Australia	0.3	1.4	1.0	2.0	0.7	0.0	0.0
<b>World</b>	<b>42.9</b>	<b>39.2</b>	<b>44.2</b>	<b>47.8</b>	<b>54.1</b>	<b>56.8</b>	<b>59.9</b>

## Apparent Steel Use, 2000 to 2006

(million metric tons finished steel products)

	2000	2001	2002	2003	2004	2005	2006
Austria	2.9	3.0	3.1	3.1	3.3	3.5	4.3
Belgium-Luxembourg	5.7	5.4	4.5	4.0	4.8	4.2	4.6
France	19.4	17.3	16.4	15.7	16.8	15.0	16.4
Germany	37.0	35.6	34.3	34.3	36.4	36.1	38.4
Italy	30.5	30.4	30.2	31.8	33.2	31.6	36.0
Netherlands	4.7	4.7	4.0	3.4	3.5	3.6	3.9
Spain	17.4	18.9	19.7	21.0	21.1	20.9	23.4
Sweden	3.6	3.1	3.3	3.6	4.0	4.1	4.4
United Kingdom	13.5	13.5	12.6	12.3	13.2	11.4	12.9
Other EU (15)	11.3	10.9	11.8	10.9	11.2	11.4	12.0
<b>European Union (15)</b>	<b>146.0</b>	<b>142.8</b>	<b>139.8</b>	<b>140.1</b>	<b>147.5</b>	<b>141.8</b>	<b>156.3</b>
Czech Republic	3.9	4.0	4.2	4.4	5.2	5.2	5.9
Poland	7.6	7.1	7.1	7.7	8.5	8.4	10.6
Other new EU (10)	5.1	5.3	5.3	5.6	6.0	5.9	6.6
<b>New EU (10)</b>	<b>16.6</b>	<b>16.4</b>	<b>16.5</b>	<b>17.7</b>	<b>19.7</b>	<b>19.6</b>	<b>23.0</b>
<b>European Union (25)</b>	<b>162.6</b>	<b>159.3</b>	<b>156.3</b>	<b>157.8</b>	<b>167.2</b>	<b>161.4</b>	<b>179.3</b>
Romania	2.6	2.7	2.8	3.1	3.3	3.3	3.9
Turkey	12.7	11.0	12.3	14.6	16.6	18.5	21.9
Others	5.8	6.5	6.4	6.7	7.4	7.2	7.6
<b>Other Europe</b>	<b>21.1</b>	<b>20.3</b>	<b>21.5</b>	<b>24.3</b>	<b>27.3</b>	<b>29.1</b>	<b>33.3</b>
Russia	24.4	26.9	24.9	28.5	29.2	30.5	36.0
Ukraine	4.9	5.8	5.5	6.6	7.2	7.2	7.1
other CIS	4.9	4.3	4.0	4.0	4.0	4.0	4.0
<b>CIS</b>	<b>34.1</b>	<b>37.9</b>	<b>35.4</b>	<b>40.2</b>	<b>41.5</b>	<b>42.9</b>	<b>48.4</b>
Canada	17.8	15.2	15.9	15.5	17.4	16.2	17.3
Mexico	14.1	13.1	14.3	14.9	16.0	16.1	18.0
United States	114.7	103.8	102.7	100.4	115.6	107.1	119.6
<b>NAFTA</b>	<b>146.6</b>	<b>132.1</b>	<b>132.9</b>	<b>130.8</b>	<b>149.0</b>	<b>139.4</b>	<b>154.9</b>
Argentina	3.0	2.6	1.7	2.8	3.6	3.7	4.5
Brazil	15.8	16.7	16.5	16.0	18.3	16.8	18.5
Venezuela	1.7	2.3	1.6	1.5	2.3	2.4	3.2
Others	7.6	7.4	7.8	7.7	8.5	9.3	9.8
<b>Central and South America</b>	<b>28.1</b>	<b>28.9</b>	<b>27.7</b>	<b>28.0</b>	<b>32.6</b>	<b>32.3</b>	<b>36.0</b>
Egypt	4.0	4.2	4.0	4.2	4.0	4.9	4.7
South Africa	4.0	4.2	4.9	4.1	4.9	4.7	6.0
Other Africa	6.5	7.2	6.9	8.5	9.2	10.1	10.9
<b>Africa</b>	<b>14.5</b>	<b>15.6</b>	<b>15.8</b>	<b>16.8</b>	<b>18.1</b>	<b>19.7</b>	<b>21.6</b>
Iran	9.6	10.6	11.3	14.7	14.5	16.1	17.9
Other Middle East	10.2	12.5	14.0	14.8	16.7	17.3	19.0
<b>Middle East</b>	<b>19.7</b>	<b>23.1</b>	<b>25.3</b>	<b>29.5</b>	<b>31.2</b>	<b>33.4</b>	<b>36.8</b>
China	124.3	153.6	186.3	247.0	272.0	326.8	356.2
India	26.3	27.4	28.9	31.2	34.3	39.2	43.1
Japan	76.1	73.2	71.7	73.4	76.8	78.0	79.0
South Korea	38.5	38.3	43.7	45.4	47.2	47.1	49.3
Taiwan, China	21.1	17.4	20.4	19.9	22.1	19.9	19.8
Other Asia	36.8	41.2	41.6	42.9	47.1	49.0	47.6
<b>Asia</b>	<b>323.0</b>	<b>351.1</b>	<b>392.7</b>	<b>459.8</b>	<b>499.4</b>	<b>560.0</b>	<b>595.0</b>
Australia and New Zealand	6.7	6.3	7.2	7.5	8.0	7.9	7.9
<b>World</b>	<b>756.6</b>	<b>774.5</b>	<b>814.7</b>	<b>894.8</b>	<b>974.3</b>	<b>1,026.0</b>	<b>1,113.2</b>